

RESOLUTION NO. 12-01-1

A Resolution by the Bonneville County Board of Commissioners to Declare its Intention to Vacate a Portion of a County Road Known as 81<sup>st</sup> North in Bonneville County

WHEREAS, the Bonneville County Public Works Department has identified a public right-of-way no longer in the public interest that should be considered for abandonment and vacation; and

WHEREAS, the portion of road requested for abandonment is a dead-end remnant of a road known as 81<sup>st</sup> North that was created when the road was realigned for US 20 Exit 313 (Hitt Road Exit); and

WHEREAS, the portion of road requested for abandonment is a 50 foot wide prescriptive easement; and

WHEREAS, the abandonment and vacation of the road will not eliminate access to public lands or water; and

WHEREAS, the abandonment and vacation of the road will not leave any real property without access to an established public right-of-way;

NOW, THEREFORE, be it resolved by the Bonneville County Board of Commissioners that, in accordance with Section 40-203, Idaho Code, it hereby declares its intention to abandon and vacate a portion of 81<sup>st</sup> North located in the Southeast Quarter of Section 21 and the Northeast Quarter of Section 28, Township 3 North, Range 38 East, of the Boise Meridian, Bonneville County, the centerline of said portion of road being more particularly described as follow:

Beginning at a point on the south line of said Section 21, said point located approximately 2140 feet West of the Southeast Corner of said Section, said point also being on the west line of a parcel owned by the State of Idaho with a Bonneville County Assessor Parcel No. RP03N38E217202, thence East on said south line approximately 1380 feet to the west line of State of Idaho owned property with Bonneville County Assessor Parcel No. RP03N38E280006 and there terminating.

BE IT FURTHER RESOLVED by the Bonneville County Board of Commissioners that a public hearing to consider said road abandonment will be held at 10:00 am on June 20, 2012, in the Commissioner's Chambers.

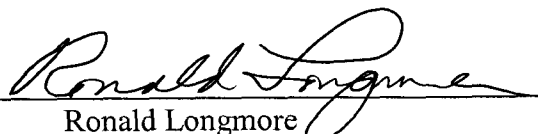
ADOPTED this 9<sup>th</sup> day of May, 2012.

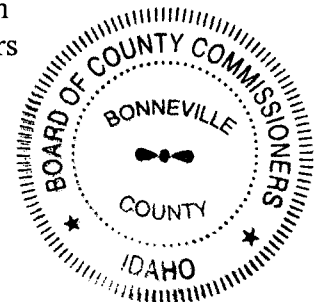
BONNEVILLE COUNTY, IDAHO

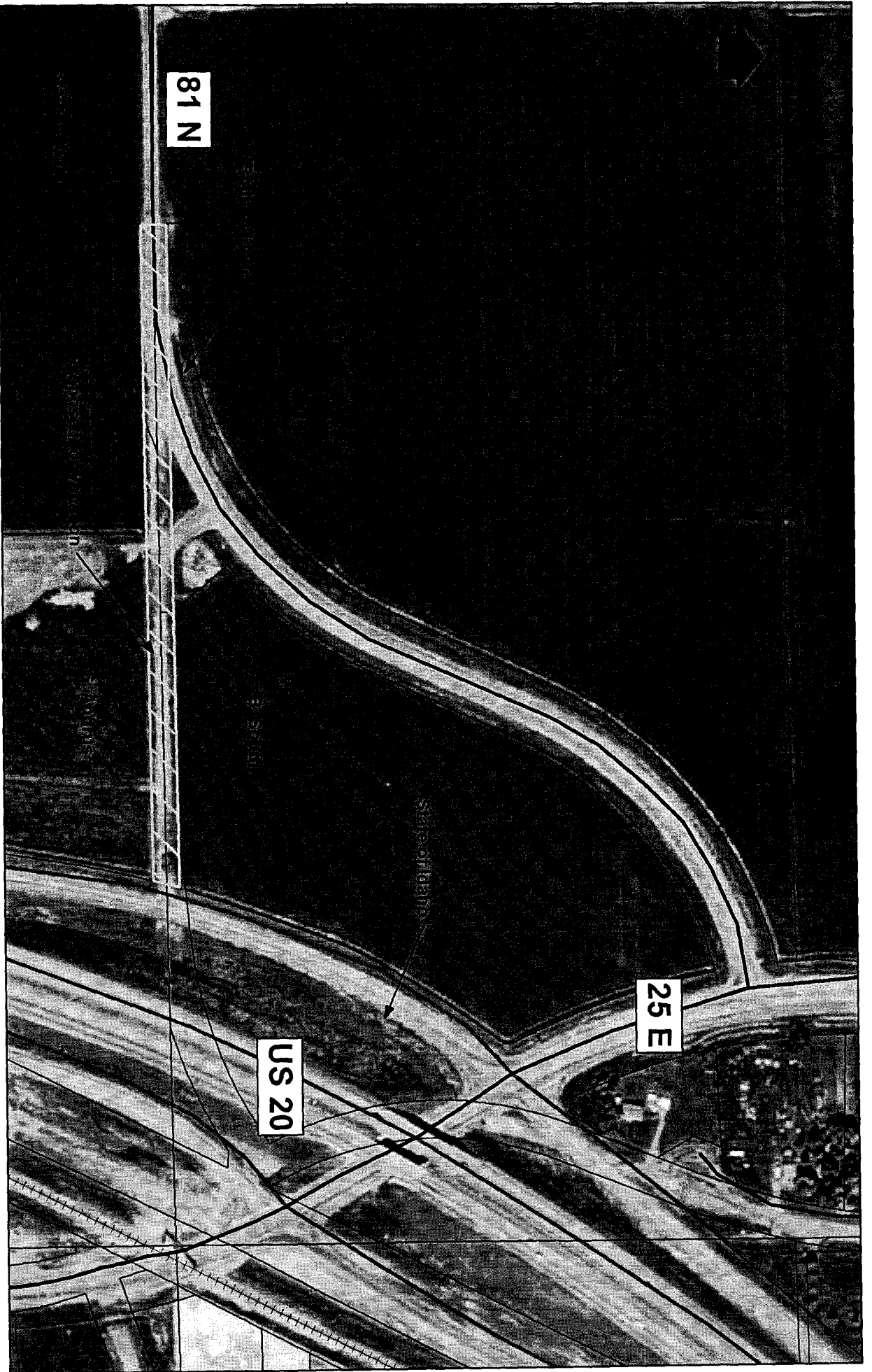


Roger S. Christensen, Chairman  
Board of County Commissioners

ATTEST:

  
Ronald Longmore  
Bonneville County Clerk





**LEGEND**

- Property Line
- County Road - Paved
- State Highway

***81st North Vacation***